

PH 121.1

Reg. No.

--	--	--	--	--	--	--	--	--	--

**St Aloysius College (Autonomous)
Mangaluru**

Semester I – P.G. Examination – M.A. English

February – 2022

**BRITISH LITERATURE I
(MEDIEVAL LITERATURE TO NEOCLASSICAL LITERATURE)**

Time: 3 hrs.

Max Marks: 70

UNIT I

Answer any ONE of the following: (15)

1. Comment on the impact of the Renaissance Movement on European society
2. Critically examine the European Medieval Culture and Society.
3. Discuss the characteristic features of Metaphysical poetry.

UNIT II

ST. ALOYSIUS COLLEGE

PG Library

MANGALORE-575 001 (15)

Answer any ONE of the following:

1. Discuss Chaucer's *The Prologue to the Canterbury Tales* as a portrait gallery of fourteenth century England.
2. Examine the mock epic elements in Pope's "The Rape of the Lock".
3. Critically examine Andrew Marvell's "To his Coy Mistress" as a metaphysical poem

UNIT III

Answer any ONE of the following: (15)

1. "Lady Macbeth is the Fourth witch in the play, *Macbeth*". Do you agree with this view? Substantiate.
2. Attempt an evaluation of *Macbeth* as a Shakespearean tragedy.
3. Discuss the social satire depicted in the play *The Way of the World*.

UNIT IV

Answer any ONE of the following: (15)

1. Examine Aphra Behn's exploration of race and power in *Oroonoko*.
2. Discuss Swift's use of satire in *Gulliver's Travels*.
3. Discuss the master/slave relation in *Robinson Crusoe*.

UNIT V

Write short notes on any TWO of the following: (2x5=10)

1. Neoclassicism
2. The title, "The Canonization"
3. The Opening Scene in *Macbeth*
4. The island in *Robinson Crusoe*

PH 122.1

Reg. No.

--	--	--	--	--	--	--	--	--	--

**St Aloysius College (Autonomous)
Mangaluru**

**Semester I – P.G. Examination – M.A. English
February – 2022**

ST. ALOYSIUS COLLEGE
PG DEPARTMENT
MANGALORE - 575 001

LITERARY CRITICISM

Max Marks: 70

Time: 3 hrs.

UNIT I

(1x15=15)

I Answer any ONE of the following

1. Discuss the arguments made by Plato against poetry in *Ion*.
2. Examine the major concerns of Aristotle in his work, *Poetics*.
3. How does Philip Sidney defend poetry in his essay "An Apology for Poetry"?

UNIT II

(1x15=15)

II Answer any ONE of the following

1. Discuss the theory of Alamkara and Riti in Indian Aesthetics.
2. Explain what G.N Devy has to say about Indian Literary Criticism.
3. What is Cultural Amnesia? How does G.N Devy connect it with Indian Literary Criticism?

UNIT III

(1x15=15)

III Answer any ONE of the following

1. "The aim of poetry should be to imitate nature and inspire emotion". Explain with reference to *Preface to the Lyrical Ballads*
2. What according to Matthew Arnold are the different ways of judging poetry?
3. How does Eliot establish a relationship between Tradition and Individual Talent in his essay? Explain.

UNIT IV

(1x15=15)

IV Answer any ONE of the following

1. What are the major points discussed by F.R Leavis in his "Introduction"?
2. Examine what Terry Eagleton says about Formalism in his "Introduction".
3. How does Terry Eagleton challenge all the definitions of Literature in his essay?

UNIT V

(2X5=10)

V. Write short notes on any TWO of the following

1. Plato's Theory of Forms
2. Aristotle's views on Epic
3. Matthew Arnold's Touchstone Method
4. Ideology according to Terry Eagleton.

**St Aloysius College (Autonomous)
Mangaluru**

**Semester I – P.G. Examination – M.A. English
February – 2022**

RESEARCH METHODOLOGY AND ETHICS

Time: 3 hrs.

Max Marks: 70

UNIT I

I A. Answer any FOUR of the following questions in about 200 words each: (4x5=20)

1. When is a Qualitative Research Methodology appropriate? Explain with examples.
2. Throw light on any three basic types of research.
3. What are the steps involved in Research Design?
4. Explain how ontological questions lead to epistemological foundations.
5. What is the relevance of Literature Review in Research?
6. Write an essay on the importance of research in academic circles.

ST. ALOYSIUS COLLEGE
PG Library
MANGALORE - 575 004

I B. Read the following passage carefully. Arrive at a “topic sentence” and frame four research questions: (5 Marks)

1. The new Omicron strain of Covid, from all available evidence, is milder than Delta. That’s a relief. Although we are still in the midst of the pandemic, we seem to be much better off. But this should not breed complacency. Viruses seldom behave the way you want them to. The world today has four times the population it had a century ago and is far more interconnected. One study finds that the global economy could lose almost \$3 trillion (Rs 223 lakh crore) due to Covid-19. It is projected to grow at 4.3 per cent in 2022, slightly below the 5.8 per cent it achieved last year (after -3.3 per cent in 2020). The International Monetary Fund (IMF) estimates global GDP losses could rise to \$5.3 trillion (Rs 393 lakh crore) over five years with several million lives lost. Strong economic growth is a key imperative for India if it is to pull more people out of poverty.

UNIT II

II A. Answer any ONE of the following in about 200 words: (1x5=5Marks)

1. What care should be taken by the researcher while listing the works cited?
2. Explain the difference between a thesis/dissertation/research paper.
3. What is meant by the term ‘a research gap’?

II B. Choose any ONE of the following elements that constitute the framework of a research proposal and explain with examples: (1x5 =5 Marks)

1. Preamble
2. Need analysis
3. Conclusions arrived at by the researcher
4. Hypothesis to be tested

II C. Correct errors of grammar, usage, and punctuation in the following passage:

(5x1=5 Marks)

The Milky Way has a pancake shapes, and Earth is located somewhere near the centre of this “pancake”. When you look at the Milky Way at night you are seeing just a portion of the galaxy. This

portion appear in a different place in the sky depending on the time of year. It is higher in the sky during the summer and winter. But during the spring and fall, it was lower, and closer to the horizon.

II D. Develop a short abstract in 150 words choosing any ONE set of title and key words given below. Apply the rules of capitalization to the title: (1x5=5 Marks)

1. **Title: the rigours of public speaking**

Key Words: number one fear, a skill, practice, success

2. **Title: skill development for employability**

Key Words: education, knowledge, technical expertise, skills, job oriented

3. **Title: artificial intelligence is here to stay**

Key Words: machines, animals, need of the hour, risks

ST. ALOYSIUS COLLEGE
PG Library
MANGALORE - 575 004

UNIT III

III A. Answer any ONE of the following in about 200 words: (1x5=5)

1. Explain the different forms of IPR.
2. What are various types of publication misconduct?

III B. Answer any ONE of the following in about 300 – 350 words: (1x10=10)

1. Explain the concept of plagiarism.
2. Describe filing and registration process of IPRs.
3. How would you define ethics to bring out its meaning?

UNIT IV

IV A. Answer any ONE OF the following in about 200 words: (1x5=5 Marks)

1. Explain the meaning and features of scholarly articles.
2. Give your views on successful scientific writing process.
3. Describe the practical hands-on experience in writing a research paper for a Humanities subject.

IV B. Rearrange the following citation details according to MLA Style sheet, 8th Edition: (5x1=5)

1. Team of Rivals: The Political Genius of Abraham Lincoln. Simon & Schuster, Doris Goodwin, 2012.
2. Twitter, 8 Apr. 2016, 4:30 p.m. @WSJ. "Generation X went from the most successful in terms of homeownership rates in 2004 to the least successful by 2015."
3. "Questions of Transport: Reading Primo Levi Reading Dante." Goldman, Anne. vol.64, no. 1, The Georgia Review, 2010, pp.69
4. Academic Search Complete, search. ebscohost.com
login.aspx?direct=true&db=f5h&AN=24093790&site=ehost-live. Accessed 19 Aug. 2020. Lorensen, Jutta. "Between Image and Word, Color, and Time: Jacob Lawrence's The Migration Series." African American Review, vol. 40, no. 3, 2006, pp. 571-86.
5. Children, Adolescents, and Media Violence: A Critical Look at the Research. Kirsh, Steven J. 2nd ed., Sage, 2006.

PS 124.1

Reg. No.

--	--	--	--	--	--	--	--

**St Aloysius College (Autonomous)
Mangaluru**

Semester I - P.G. Examination - M.A. English
February - 2022

MODERN INDIAN THEATRE

Time: 3 hrs.

Max Marks: 70

UNIT I

ST. ALOYSIUS COLLEGE
PG Library
MANGALORE - 575 006

Answer any ONE of the following:

(15)

1. Discuss "Theatre of the Oppressed" in the context of Indian theatre.
2. Evaluate the growth of "Theater of Roots" movement with a special focus on the role of playwrights, directors and other contributing personalities of various regions.
3. Describe the genesis, evolution and contributions of IPTA in the context of the modern Indian theatre.

UNIT II

Answer any ONE of the following:

(15)

1. Discuss *Tughlaq* as a representation of Aristotelian tragedy.
2. Vijay Tendulkar affirms that the play, Ghāshirām Kotwāl represents "The decadence of the class in power" Substantiate.
3. How does Girish Karnad portray the institutionalised power and its politics in the play, *Thughlaq*

UNIT III

Answer any ONE of the following:

(15)

1. Critically comment on the following with supporting arguments from the play-Badal Sirkar's *Evam Indrajit* refutes the proscenium theatre to establish the third theatre.
2. Critique Mahasweta Devi's *Mother of 1084* as a socio-political allegory of the time.
3. Elucidate how *Charandas Chor* exemplifies paradoxes and contradictions prevalent in the Indian society.

UNIT IV

Answer any ONE of the following:

(15)

1. Critically assess the plight of the female characters in the play *Harvest*.
2. Critique *Purdah* as an agency for staging resistance in the context of gender.
3. Is Mahesh Dattani's *The Big Fat City* a black comedy? Substantiate with reference to the text.

UNIT V

Answer any TWO of the following:

(2x5=10)

1. Modern Theatre in India
2. *Tughlaq's* divided self
3. Repressive State Apparatus in *Mother of 1084*
4. *Matrabhoomi*

PH 126.1

Reg. No.

--	--	--	--	--	--	--	--

**St Aloysius College (Autonomous)
Mangaluru**

Semester I - P.G. Examination - M.A. English

February - 2022

LINGUISTICS AND SEMIOTICS

Time: 3 hrs.

Max Marks: 70

Unit I

ST. ALOYSIUS COLLEGE
PG Library
MANGALORE - 575 004

Answer the Following questions

1. Describe any FIVE of the following English consonants based on the Three Term Label 5 Marks

/s/ /l/ /dʒ/ /g/ /ŋ/ /r/ /t/ /k/

2. Draw a vowel quadrilateral, indicate the positions of any FIVE of the following vowels 5 Marks

/ʌ/ /ɪ/ /e/ /ɜ:/ /uə/ /u:/ /aʊ/ /eə/

3. Transcribe the following passage 10 Marks

When I saw their office, I knew right away that I had no chance of getting a job there. During the interview, I caught a glimpse of a richly furnished room with huge glass vases on either side of the wall... I can't imagine they'd want me on their team.

Unit II

4. Attempt a Morphological analysis of any TWO of the following words 2X2=4

a. unhappiness b. buildings c. conversational

5. Mark appropriate intonation with tonic stress on any TWO of the following sentences 2x2=4

a. Can we change the topic?

b. There she comes!

c. Don't touch that cake.

d. There was a huge crowd at the railway station.

6. Attempt an Immediate Constituent analysis of any THREE of the following sentences 3X2=6

a. The commentator made a controversial remark.

b. Too many cooks spoil the broth.

c. The tailor at the mall gives the clothes on time.

d. Five lions are moving slowly towards the herd of deer.

Contd...2

PH 126.1

7. Disambiguate any TWO of the following sentences

- a. He saw the monkey wearing his glasses.
- b. The police dispersed the protestors with lathis.
- c. Meena loves her mother and so does Sheela .
- d. He read the book that his friend had given him last month.

8. Draw Tree diagrams and apply T-rules to derive any ONE of the following

2x2=4

- a. The little boy threw a stone at the mango on the tree .
- b. A number of people have shown great interest in Rani's project.
- c. Her dog was fed with biscuits.

Unit III

9. Answer any TWO of the following questions

2x10=20

(Answer one question each from both the groups)

Group A

- a. How is Peirce's model of the sign different from that of Saussure?
- b. Explain the functions of language given by Jacobson

Group B

- a. Differentiate between connotation and denotation
- b. Give illustrations to define Metaphor and Metonymy

ST. ALOYSIUS COLLEGE
PG Library
MANGALORE-575 004

Contd...3

Unit IV

10. Attempt a semiotic analysis on any ONE of the following print advertisements

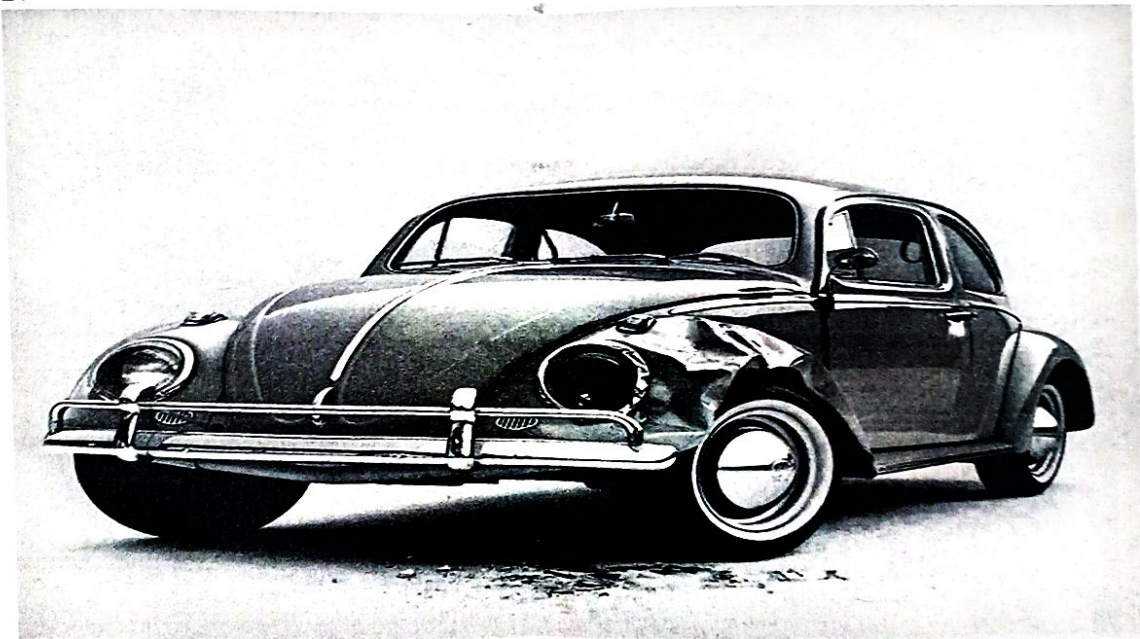
10 marks

A.



ST. ALOYSIUS COLLEGE
 PG Library
 MANGALORE

B.



**Sooner or later, your wife will drive home
 one of the best reasons for owning a Volkswagen.**

Women are soft and gentle, but they hit things.
 If your wife hits something in a Volkswagen, it doesn't hurt you very much. VW parts are easy to replace. And cheap. A fender comes off without dismantling half the car. A new one goes on with just ten bolts. For \$24.95, plus labor.

And a VW dealer always has the kind of fender you need. Because that's the one kind he has.
 Most other VW parts are interchangeable too. Inside and out. Which means your wife isn't limited to fender smashing. She can job the hood. Graze the door. Or bump off the bumper.

It may make you furious, but it won't make you poor.
 So when your wife goes window-shopping in a Volkswagen, don't worry. You can conveniently replace anything she uses to stop the car.
 Even the brakes.



PS 128.1

Reg. No.

--	--	--	--	--	--	--	--

**St Aloysius College (Autonomous)
Mangaluru**

Semester I – P.G. Examination – M.A. English

February – 2022

ECOCRITICISM

Time: 3 hrs.

Max Marks: 70

Answer any ONE of the following:

UNIT – I

ST. ALOYSIUS COLLEGE
PG Library
MANGALORE - 575 004 (15)

1. Critically examine the origins and development of Ecocriticism in American Literature as illustrated by Cheryll Glotfelty.
2. Explain the role of women in forest economy and saving forests as stated by Vandana Shiva.
3. What is the threat that Carson is referring to in "A Fable for Tomorrow"?

UNIT – II

Answer any ONE of the following:

(15)

1. How does the poem, "The Description of Cooke Ham" portray Lanyer's relationship with her patron, Margaret Clifford, Countess of Cumberland?
2. Bring out the central theme of the poem "Sleeping in the Forest" by Mary Oliver.
3. Attempt an Ecocritical reading of Gieve Patel's "On Killing a Tree"

UNIT – III

Answer any ONE of the following:

(15)

1. Explain Ursula K. Le Guin's *The Word for the World is Forest* from a postcolonial perspective?
2. Critically examine Amitav Ghosh's *The Hungry Tide* as an Ecocritical text
3. Discuss the elements of folklore in Amitav Ghosh's *The Hungry Tide*

UNIT – IV

Answer any ONE of the following:

(15)

1. Critically analyze Mahasweta Devi's, *Arjun*.
2. How does *Trashed* focus on the waste management industry having deleterious consequences on human and animal life? Explain
3. Discuss the major issues in the documentary, *Trashed*.

UNIT – V

Write short notes on any TWO of the following:

(2×5=10)

1. Cheryll Glotfelty's explanation of Ecocriticism
2. "Factories are Eyesores"
3. Piyali Roy in *The Hungry Tide*
4. The Shabar Tribe